

<https://www.sciencefriday.com/educational-resources/the-albedo-effect-urban-heat-islands-and-cooling-down-your-playground/>

# URBAN ALBEDO

## THE CONSULTANT'S PERSPECTIVE

15<sup>th</sup> October 2018

Greater London Authority

Gabriela Costa

Senior Sustainability Consultant (Architectural)

# THIS IS **SWECO**

Sweco plans and designs the communities and cities of the future



EXPERTS  
**14,500**  
employees



ANNUAL TURNOVER  
**€ 1.7**  
billion revenue

**#1 European Engineering Consultancy**

“Built on local presence with international capability”



Leadership positions in 6 markets:

**Sweden, Finland, Netherlands, Denmark, Belgium and Norway**

# BUSINESS LINES

Energy

Project Management

Air Quality

Structural Engineering

One Click  LCA

Asset Management

Environment

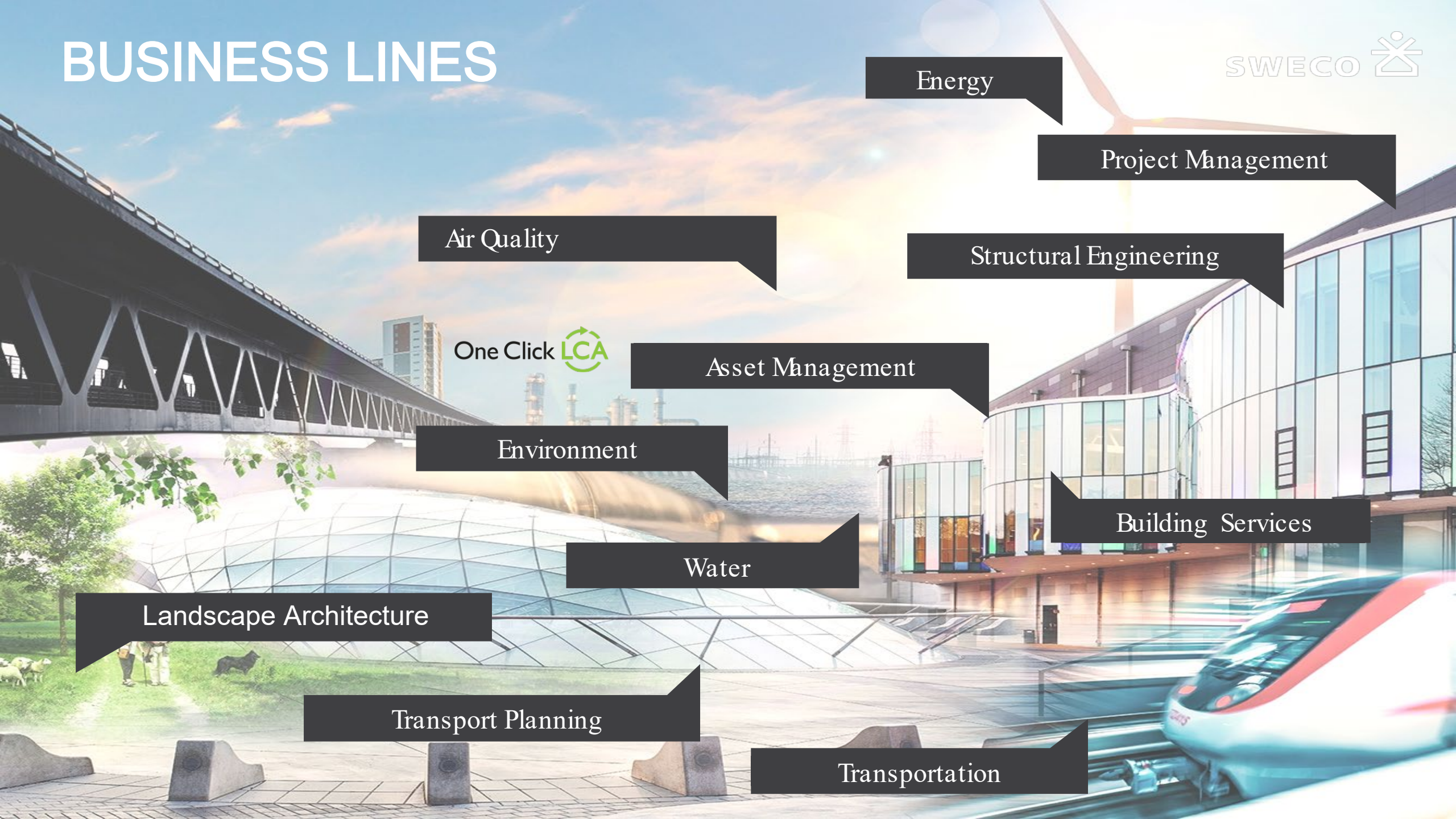
Building Services

Water

Landscape Architecture

Transport Planning

Transportation



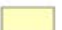




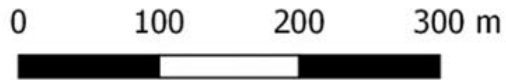
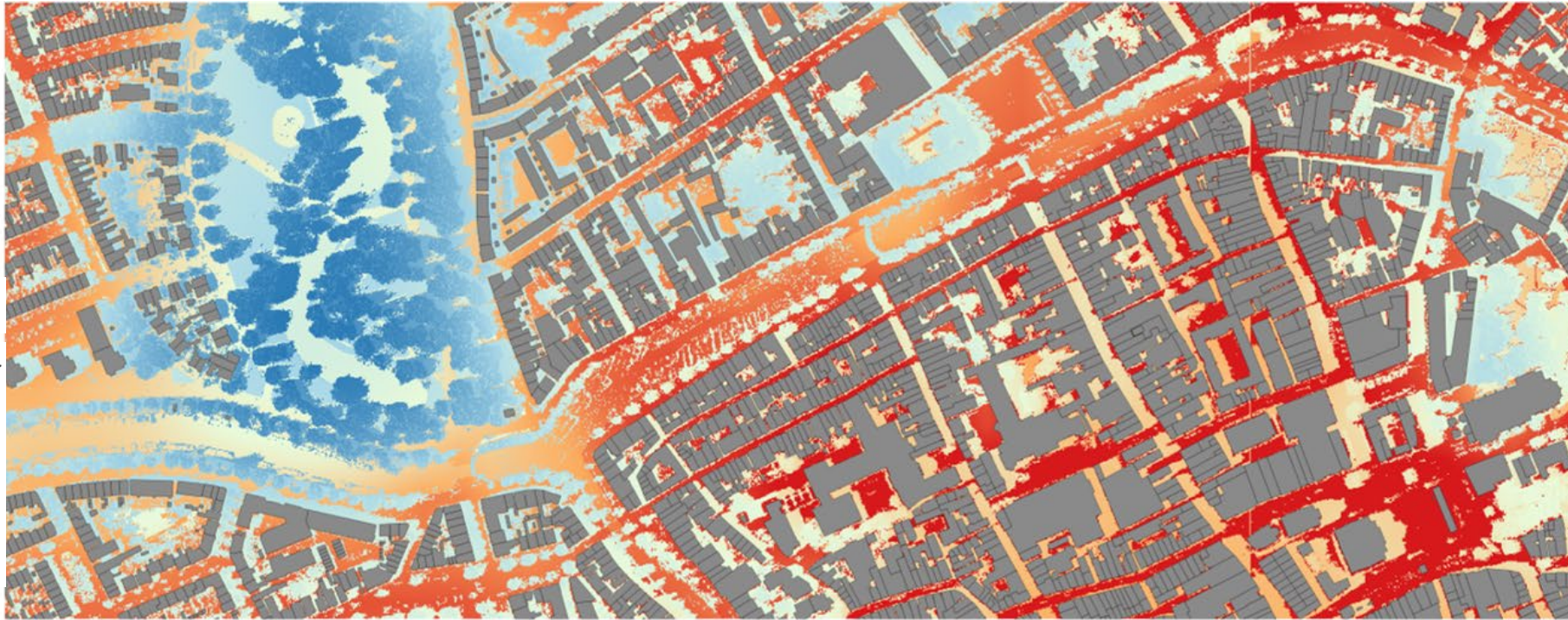
# URBAN HEAT ISLAND EFFECT





Legend

-  Much cooler
-  Cooler
-  Normal
-  Warmer
-  Much warmer



# Heat Stress Card

Groningen, Netherlands

# WHAT CAN WE DO ABOUT IT?



2 Pancras Square,  
King's Cross, London



Cool roofs

Vegetation

High  
albedo



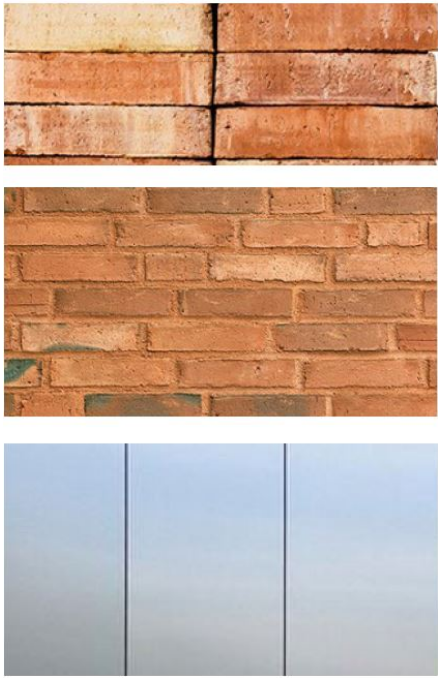


# URBAN ALBEDO CALCULATOR

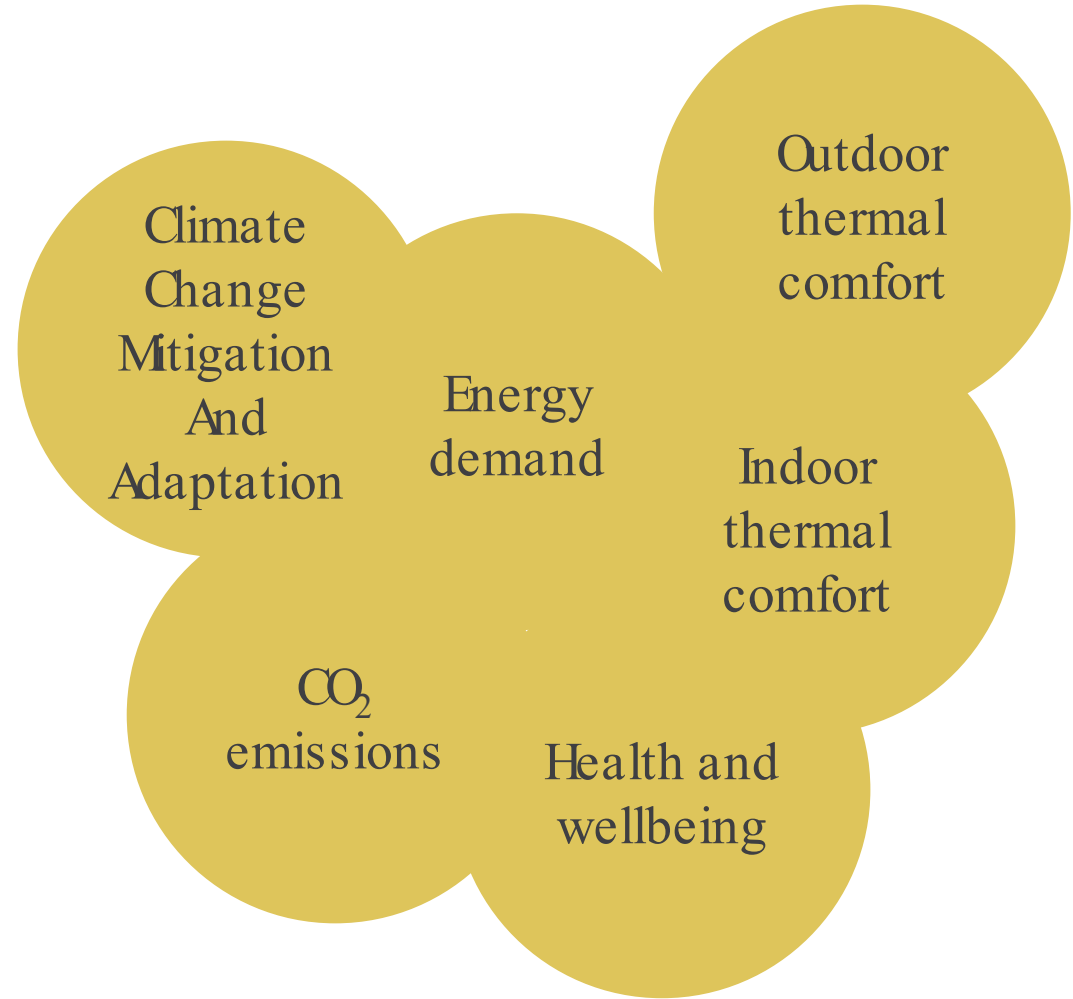
Changing the way we design  
the communities and cities  
of the **FUTURE**.

- Assessing the **UHI** of the existing context and of proposals
- Enabling the creation of **ADAPTATION** plans
- **CONSCIOUS** selection of material palette and understanding their impacts on energy consumption, health and wellbeing.





Materials palette





**SWECO**

