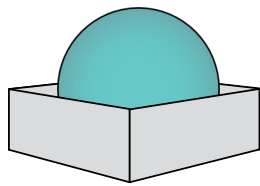


PREPOSITIONS OF PLACE

A1

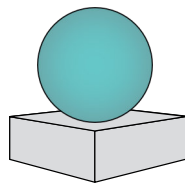
1. Write the prepositions.

under behind on next to between ✓ in in front of above

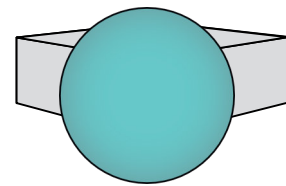


in

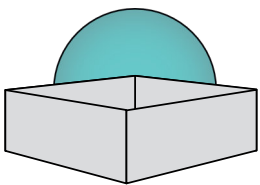
.....



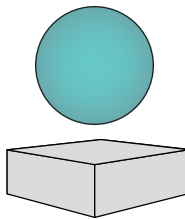
.....



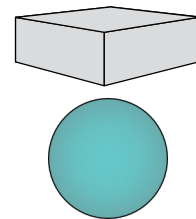
.....



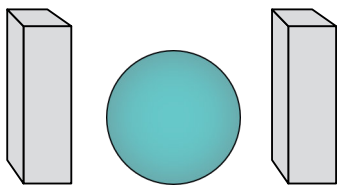
.....



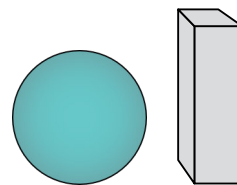
.....



.....



.....



.....

2. Name the objects.

laptop fridge stove sofa ✓ lamp chair phone table
 bed wardrobe TV shower



lamp

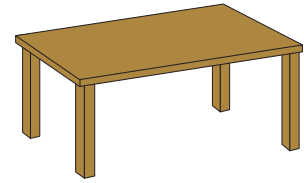
.....



.....



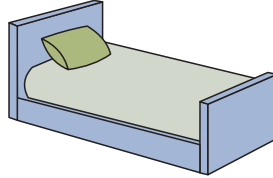
.....



.....

.....

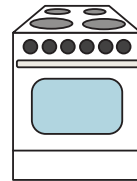
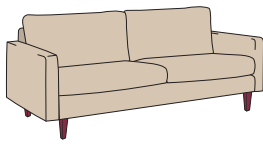
.....



.....

.....

.....



.....

.....

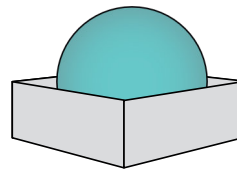
.....

Using prepositions

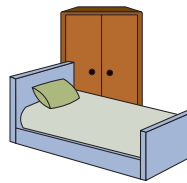
To describe an object's location, we use **to be** before the preposition.

For example,

The ball is in the box.
to be + preposition



3. Select the correct sentence.

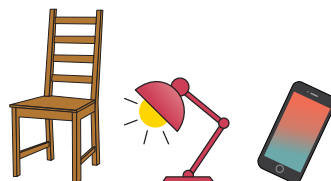


The dog is in the shower.

The wardrobe is in front of the bed.

The dog is next to the shower.

The wardrobe is behind the bed.



The table is under the stove.

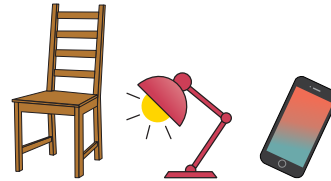
The lamp is under the chair and the phone.

The stove is under the table.

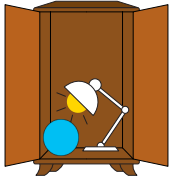
The lamp is between the chair and the phone.



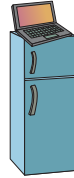
- The TV and the phone are next to the table.
- The TV and the phone are above the table.



- The phone is next to the chair.
- The lamp is next to the chair.

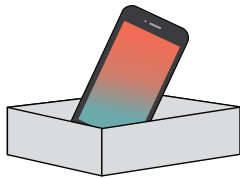


- The lamp and the ball are on the wardrobe.
- The lamp and the ball are in the wardrobe.

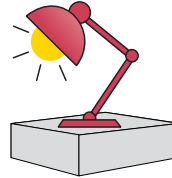


- The laptop is on the fridge.
- The laptop is in the fridge.

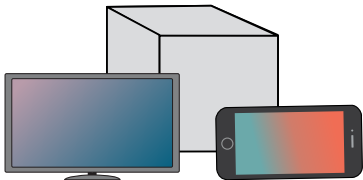
4. Describe the objects' locations.



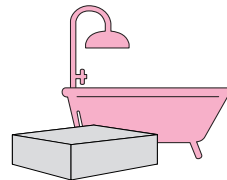
The *phone* is *in* the box.



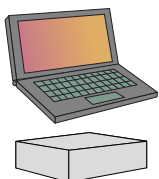
The is the box.



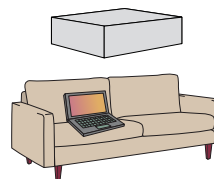
The and the
are the box.



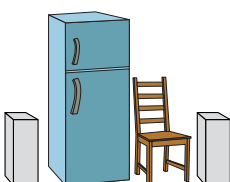
The is
the box.



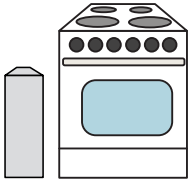
The is
the box.



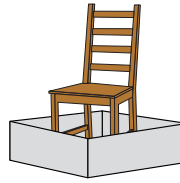
The and the
are the box.



The and the are
the boxes.

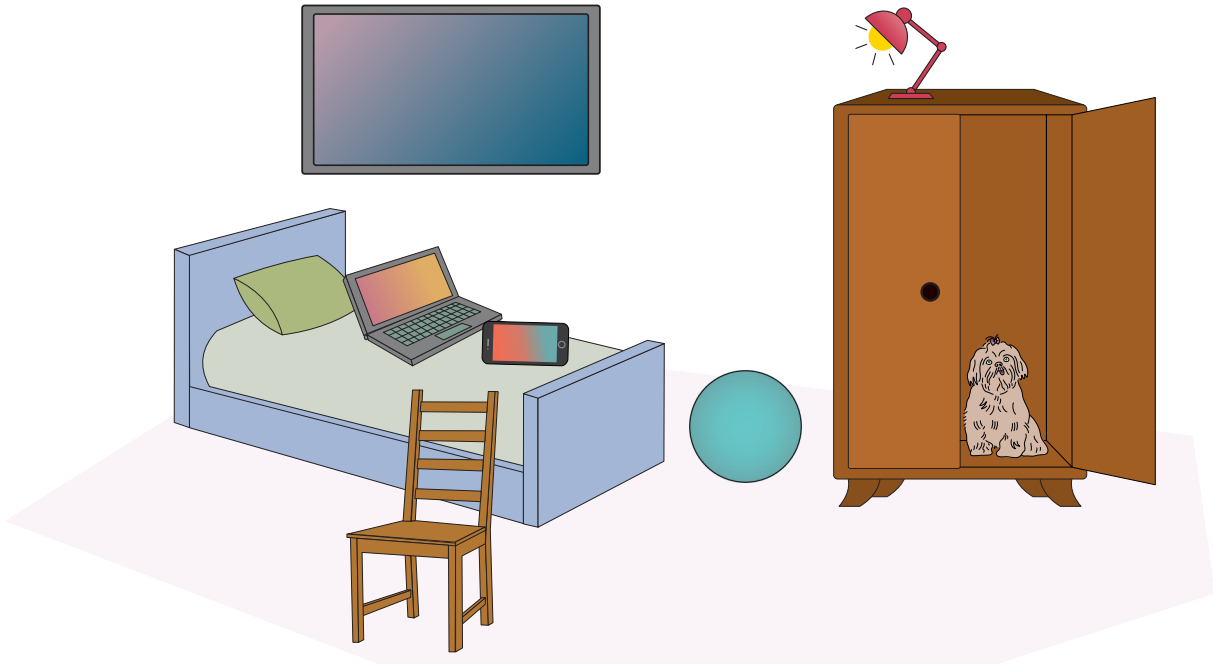


The is
..... the box.



The is
the box.

5. True or false?



TRUE FALSE

The dog is under the wardrobe.

The TV is above the bed.

The chair and the lamp are in front of the bed.

The chair is in next to the dog.

The phone and the laptop are on the chair.

The ball is between the bed and the wardrobe.

The wardrobe is behind the bed.

The TV is between the sofa and the chair.

The bed and the chair are in front of the TV.

6. Answer the questions.



Where is Tony?

Tony is on the sofa. / Tony is next to the dog.

Where is the phone?

Where are the laptop and the lamp?

Where is the big table?

Where is the ball?

Where is the TV?

Where are the chairs?

Where is the dog?

Where is the small table?

7. Game!

Prepositions of place (A1)

Teacher's notes

Task 7.

Each student has a set of cards showing images of household objects (see next page).

The teacher provides instructions for how to arrange the objects (*the phone is on the wardrobe, the stove is next to the shower*).

The teacher can then ask the students where a particular item is.

The game can be repeated with different instructions for arranging the cards.

The game can also be played among students in pairs/groups.

