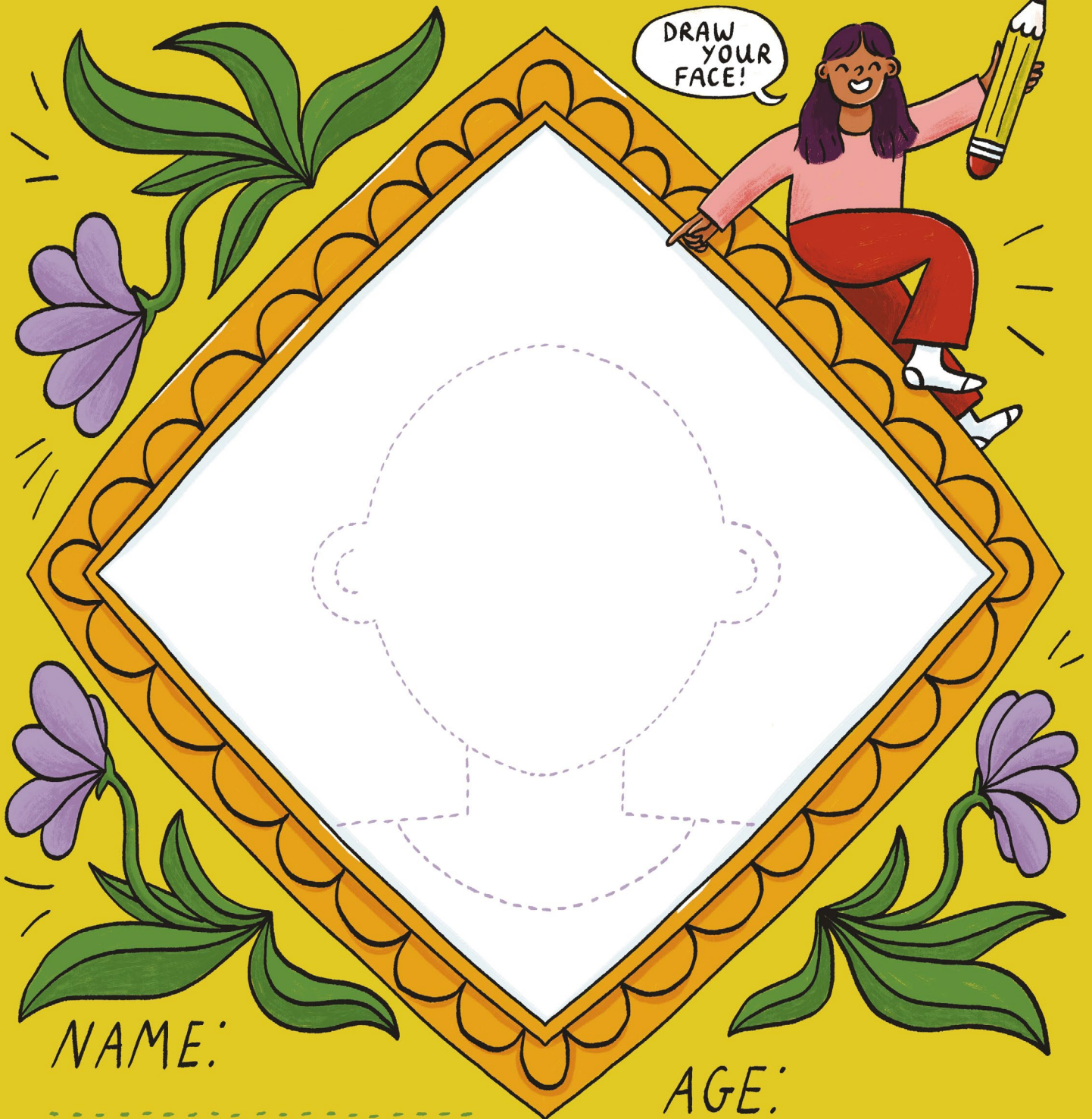


CHILDREN'S PACK

THIS IS ME!

DRAW YOUR FACE!

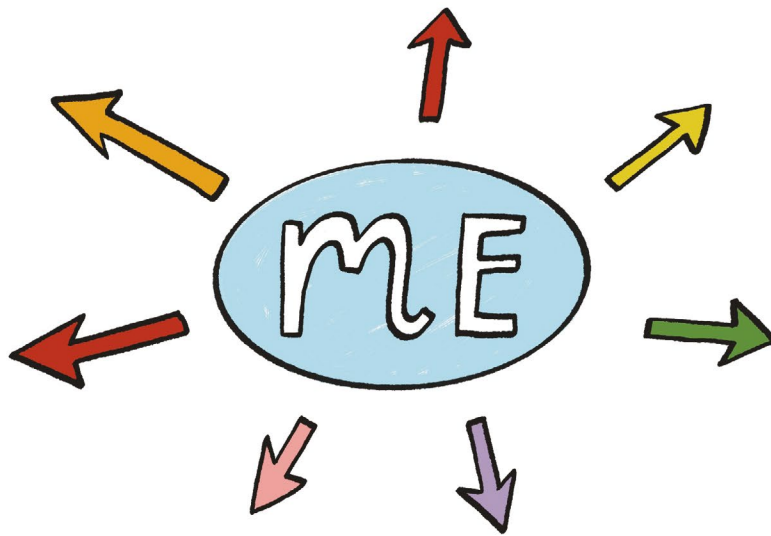


NAME:

AGE:

2 What else makes you YOU?

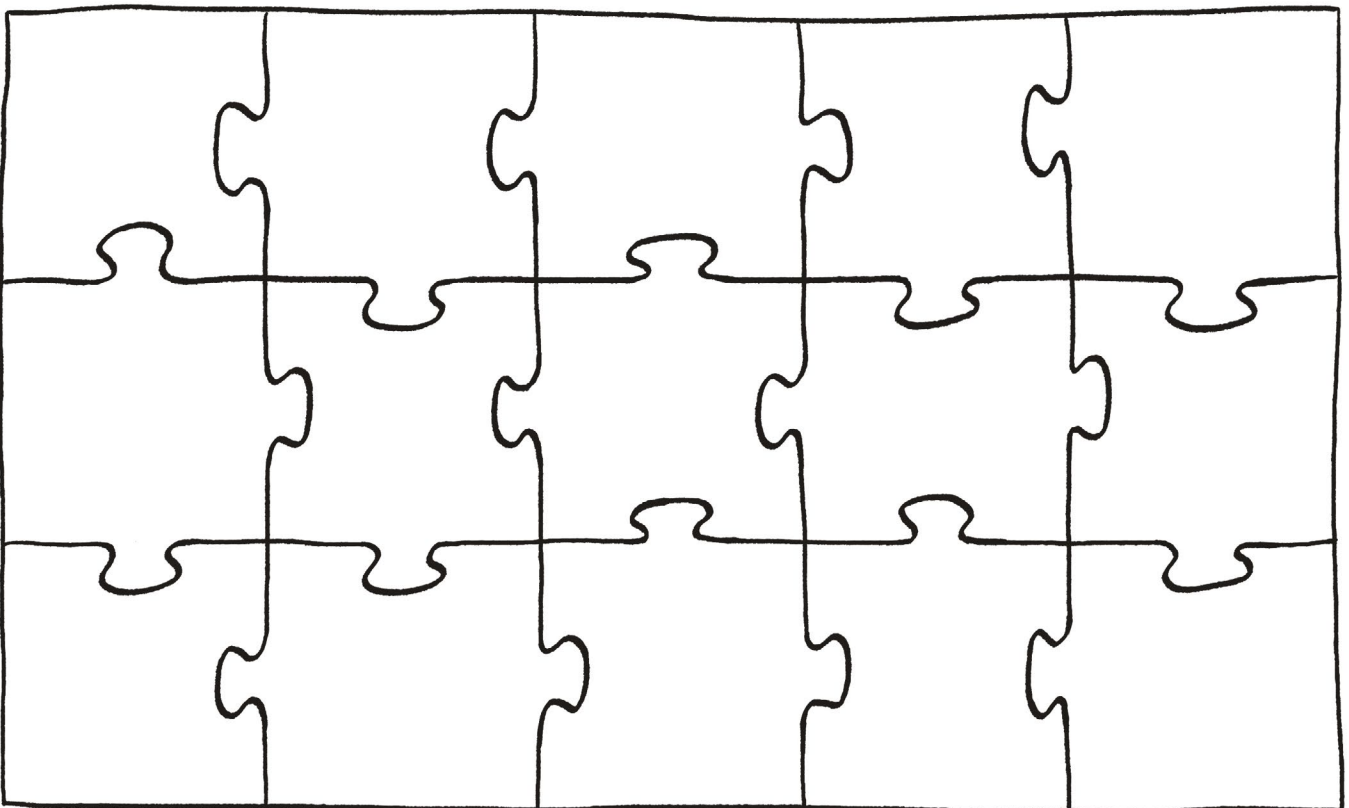
Complete the mind map....



Resource 2

3 All the puzzle pieces matter...

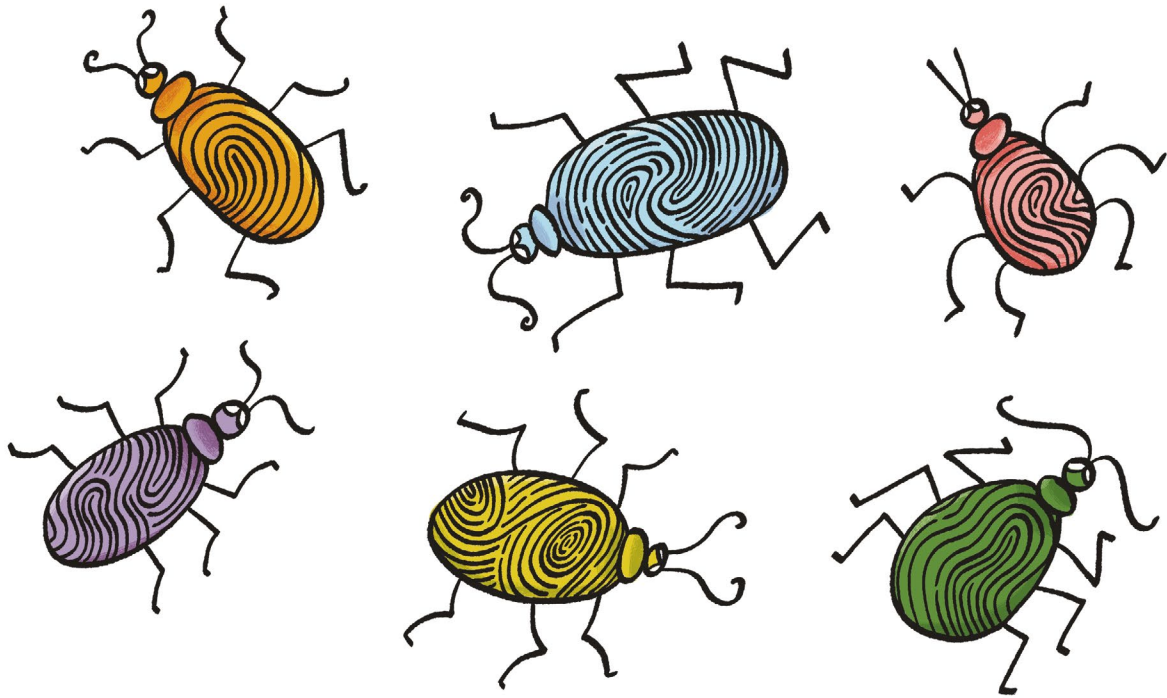
Draw and colour each piece of the puzzle pieces that show what makes up YOU.



Resource 3

SESSION 2

Identity through art **KS2**
Art to show YOU **KS1**



Resource 4

1 Why are fingerprints so special?

Use ink or paint to stamp your fingerprint below...
Compare your fingerprints with those of the people at your table?
Does anyone have any the same?



A large, empty rounded rectangular box for stamping fingerprints.

Resource 5



Resource 6

2 Special silhouettes

Just like a fingerprint, if you were to fill your silhouette with everything that makes you YOU then every single person would be unique and different.

What does this silhouette tell you about this person?



A large rectangular box with a dashed line for writing.

Either have a go at drawing your own silhouette based on an image of you or use one of the silhouettes on the next pages or provided by your teacher.

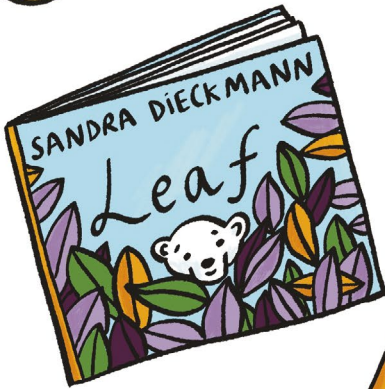
Reflection questions: Why is it important to think about your identity? Why is it important that everyone's identity is different? What would the world be like if it wasn't? What advice would you give to someone who is struggling to understand their identity?





SESSION 3 Home and belonging KS2 Is a house a home? KS1

1 What is 'belonging'? What is a home?



Having read one of these books... Discuss...

Discussion questions:

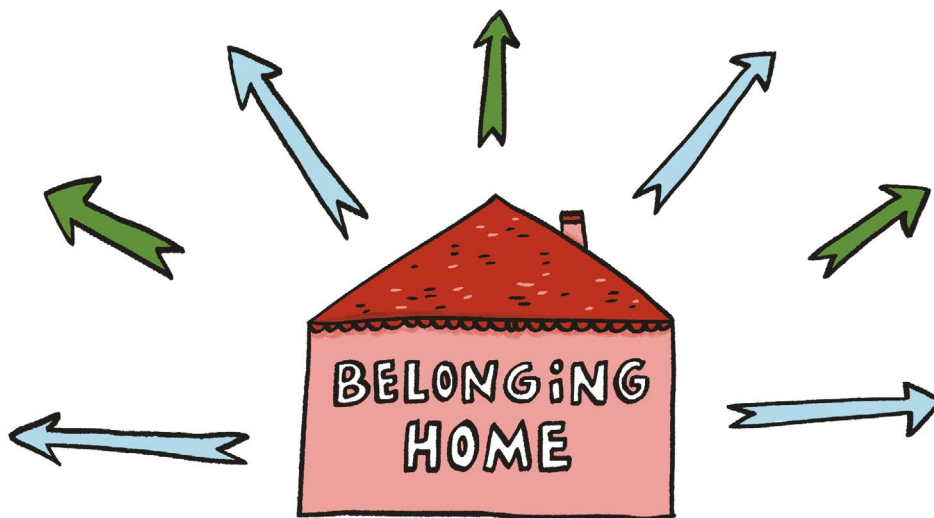
What emotions do you have when you feel you belong?

What helps you to feel like you 'belong'?

What about if you don't feel you belong?

Who might feel like that?

- 1) Mind map in **GREEN** what 'belonging' means to you...
- 2) Mind map in **BLUE** what 'home' means to you...



Are there any crossovers?
Is there anything you wrote in both colours?
Why do you think this is?

CINQUAIN:

This type of poem typically consists of **five lines**, using the following structure:

Line 1: 2 syllables
Line 2: 4 syllables
Line 3: 6 syllables
Line 4: 8 syllables
Line 5: 2 syllables

Could you present this on a shape of your choice?



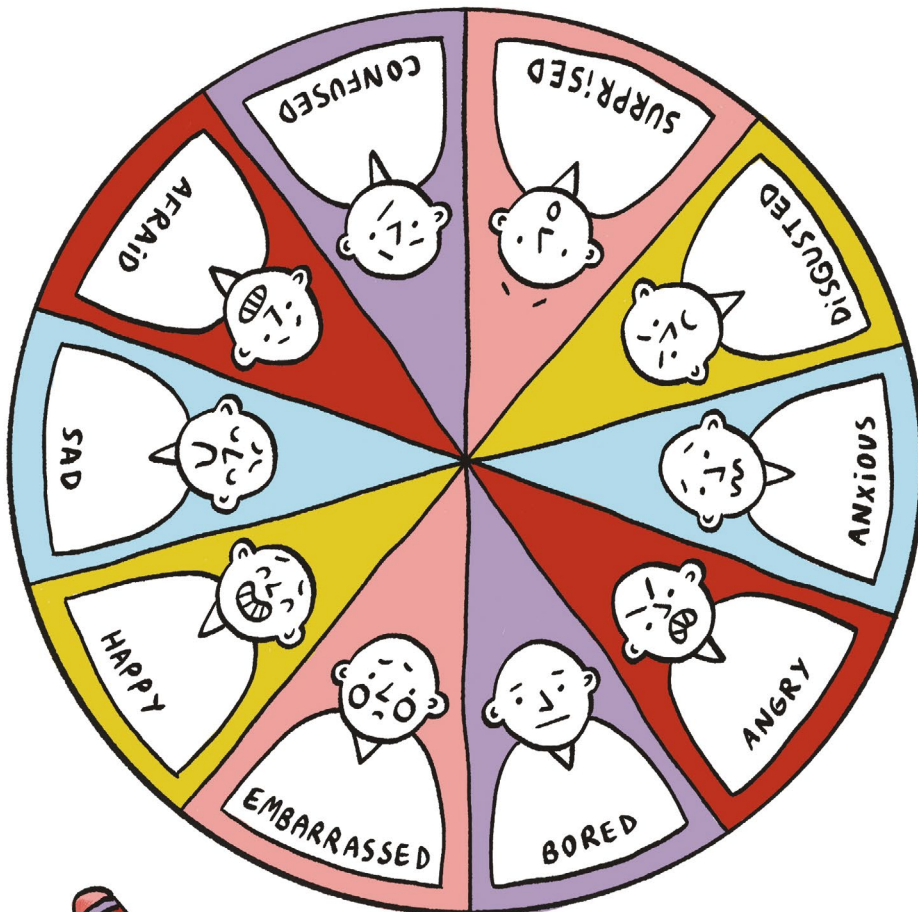
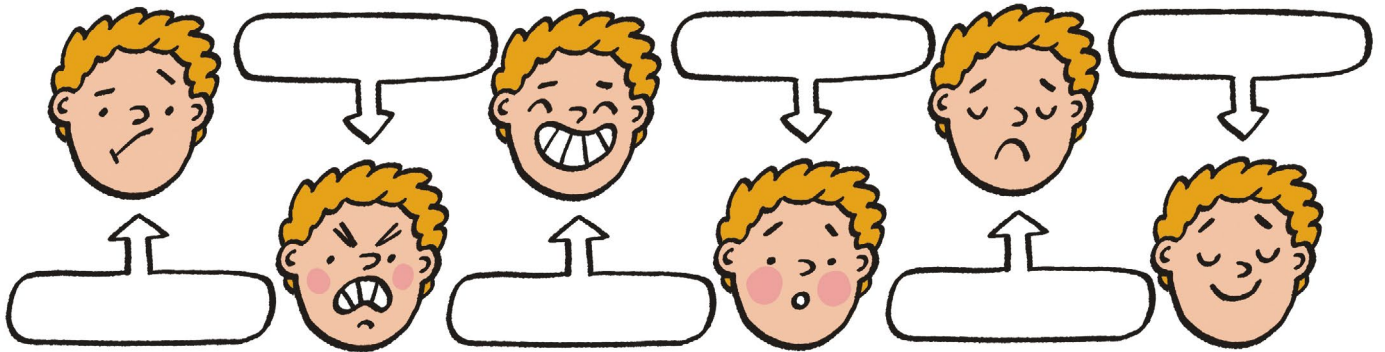
Title: _____

Reflection Question: How can you help others have a sense of 'belonging'?

SESSION 4 Expressing yourself **KS2**
Being YOU **KS1**

1 How are you feeling today?

How would you describe these emotions?



Resource 9

Finally: How are you feeling today?



2 How do you express how you're feeling?

Do you talk? Do you write? Do you dance?
Do you play sport? Do you draw?



Artwork to express who YOU are

OPTION 1

Use a range of materials to create a collage of YOU.

OPTION 2

Use clay to create a sculpture of YOU.

OPTION 3

Use paint/pastel or both to create an image of YOU.

All of these pieces of artwork could be an image of you; something you are interested in; or just images of things that make you YOU.

REFLECTION

Write down answers to these questions...

1) What do you love about yourself?

2) What do you like about yourself?

3) What are you proud of yourself for?

4) What do you enjoy about yourself?

PLENARY:

Display today's artwork with your label that answers the questions. Leave a blank post-it next to your display for people to write comments on.

Walk around your class and leave positive comments on others' post-it notes about their creation today.

SESSION 5 Identity and sound KS2 Music and YOU KS1

1 Hearing colours

Listen to the 3 different pieces of music from your teacher.

Each time you listen, hold up/point to a different coloured card depending on how it makes you feel. Why does this colour match the music?

Did you know that some people see colours when they hear music?

Discuss: What genres of music do you know? Which do you feel is most suited to your 'identity'? Why? Is this because of your culture/faith/family/friends?



Resource 10

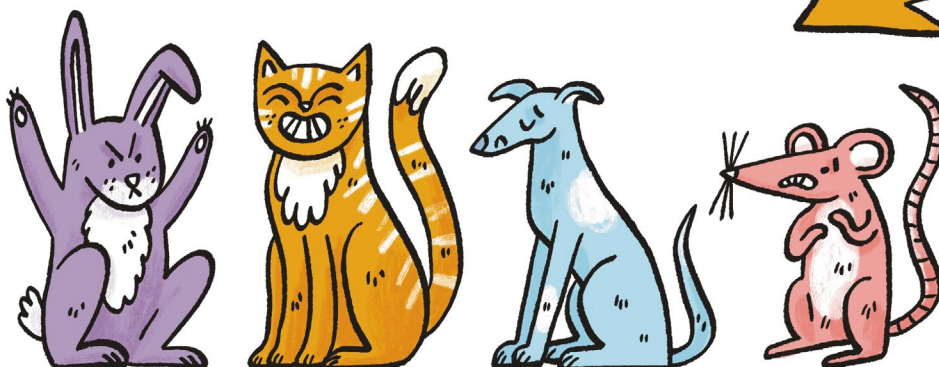
2 Music marvels

Use Music Lab song maker or instruments of your choice to create a piece of music that you feel reflects your identity. How does this link with emotion and colour?

On Music Lab, experiment with instruments/tempo/layering/percussion to get as close as possible to reflecting 'you'.

EXTENSION:

How could you include spoken word or lyrics to add another element to this?



Resource 11



Listen to some of your friends' compositions and match the mood to these animal characters.

How does mood link with personality and therefore identity?

