

Highlights from the Kent Research Partnership



August

We held the second panel meeting for Research and Training Fellowships! The applications were very varied, but all related to one of the Communities of Practice. The panel provided detailed feedback to all applicants, and were delighted to fund three projects. We look forward to working with the new Fellows - keep an eye out for their project updates in upcoming CoP meetings!

September

We celebrated the halfway point of the project with a fantastic event at Aylesford Priory!

We welcomed more than 70 participants, including a mix of people with lived experience and different professional backgrounds and representatives from other NIHR-funded social care partnerships.

Prof Vic Rayner, CEO of the National Care Forum, delivered a keynote presentation that underscored the vital role of research in social care, especially in shaping the 'customer of the future' and building on digital and technological advancements.

A standout presentation of the day was delivered by John Potts, Su Allcock and Collette Thornton – Experts by Experience, who support the Kent Research Partnership. Collette, Su and John offered an important perspective on the partnership's impact.

You can read more about the day here:
<https://research.kent.ac.uk/chss/10156-2/>



October & November

We had some brilliant CoP meetings in Autumn 2023.

In October, Diane Fox and colleagues presented a fascinating proposal about investigating some of the hidden social work roles, such as at panel meetings. CoP members provided feedback to help shape the proposal and we look forward to hearing how this project progresses in 2024.

In November, Sally Nieman presented about her research related to social work with older people, and her role in a local authority. We particularly loved the quote she shared from Zora Neale Hurston: "Research is formalized curiosity. It is poking and prying with a purpose."

We also heard from Prof Alex Stevens about current policy and practice in drug addiction, and particularly high-tolerance housing. Great discussions and ideas for collaboration across social care and public health!



News & opportunities

From Practice to Research: Navigating the Path to Addressing Burnout in Social Work

Hannah Kingsford, KRP Research Fellow, writes:

“In April 2023, I stepped back from my role as a social worker working with adults, and into the role as the first Research and Training Fellow with Kent Research Partnership. Within a week I underwent a dramatic change of pace and place, going from home visits, assessments and paperwork to attending the NIHR annual conference, sitting amongst some of the best minds in British social care research in the opulent Law Society headquarters in London...”

Read the rest of Hannah’s brilliant blog about her experiences so far and her progress with her project exploring burnout in the social work workforce here:

<https://research.kent.ac.uk/chss/research/kent-research-partnership/our-blog/from-practice-to-research/>

Communities of Practice: dates for your diary

8th January (12-1): Supporting, enhancing and diversifying the social care workforce - with Prof Ann-Marie Towers seeking feedback on a new Workforce Research Partnership proposal. [Register here on Eventbrite](#)

18th January (12-1): Supporting people with complex needs throughout the lifespan - focusing on homecare research with Kelly Wilson. [Register here on Eventbrite.](#)

20th February (12-1): Our first joint CoP focusing on digital innovation and research skills and training! [Register here on Eventbrite.](#)

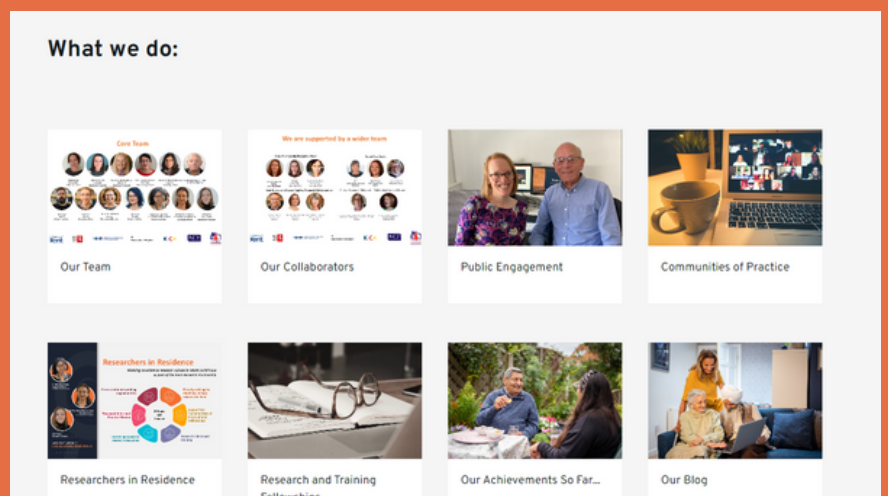
Call for professional and public advisers

Dr Lavinia Bertini, who presented at the Complex Needs CoP in October, is seeking two more people to support the team in developing a research proposal around the role of community-based care services in assessing and supporting the food and drink needs of older people living at home. People with professional and/or personal experience of this topic are warmly encouraged to get involved. You will receive a thank you voucher.

If you are interested, please contact Lavinia by 9th January! You can email Lavinia at l.bertini@bsms.ac.uk or call her on 07795 540753.

We have a new website!

Go to <https://research.kent.ac.uk/chss/research/kent-research-partnership/> to take a look:



We hope you will find it a useful resource for finding opportunities and event links, and sharing information about the Partnership with others!

Huge thanks to Dr Rasa Mikelyte for all the work which has gone into this.

Please get in touch!



KentResearchPartnership@kent.ac.uk



[@ResearchKent](https://twitter.com/ResearchKent)



<https://research.kent.ac.uk/chss/research/kent-research-partnership/>